



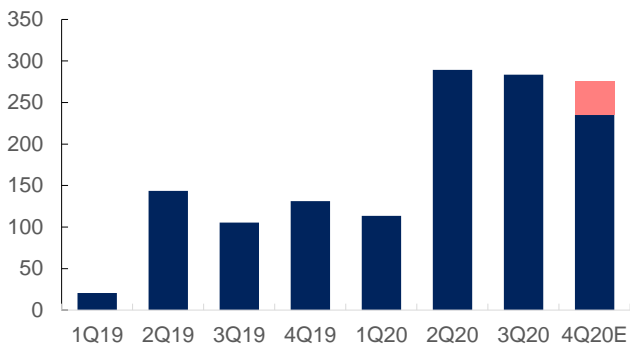
信达证券
CINDA SECURITIES

	2018A	2019A	2020E	2021E	2022E
	6,270.80	5,742.78	6,930.34	9,073.13	10,990.62
YoY	6.73%	-8.42%	20.68%	30.92%	21.13%
	429.44	400.76	967.30	1,504.64	1,845.25
YoY	511.02%	-6.68%	141.37%	55.55%	22.64%
	25.20%	22.84%	28.58%	30.65%	30.57%
ROE	10.76%	8.37%	12.06%	10.96%	10.45%
EPS	0.52	0.48	0.80	1.11	1.37
P/E	126.22	220.24	82.12	58.66	47.83
P/S	14.08	15.37	12.74	9.73	8.03

2021 01 26

币

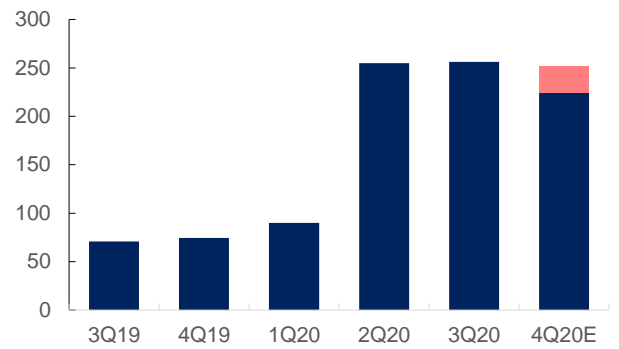
■ 归母净利润 ■ 4Q20E (上限-下限)



Wind

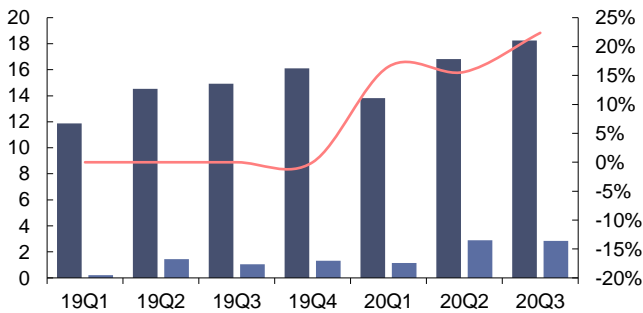
币

■ 扣非净利 ■ 4Q20E (上限-下限)



Wind

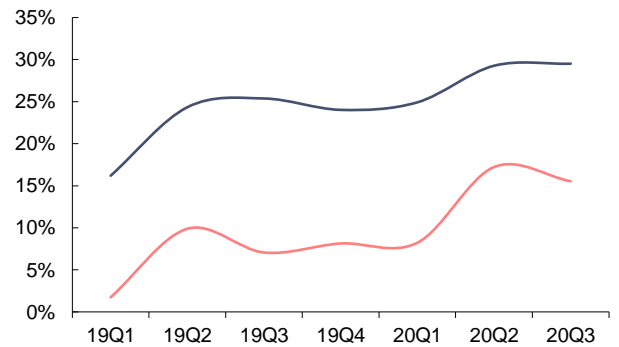
币

 ■ 营业收入 (亿) ■ 归母净利润 (亿)
 — 营收YOY (%)


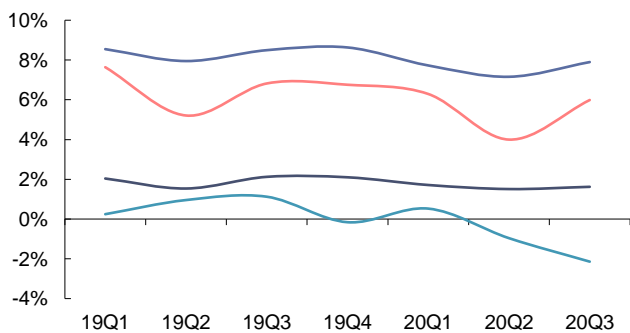
Wind

币

— 毛利率 (%) — 净利率 (%)

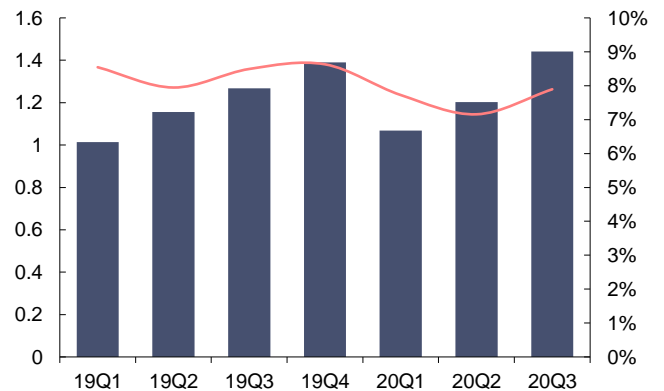


Wind

 — 销售费用率 (%) — 管理费用率 (%)
 — 研发费用率 (%) — 财务费用率 (%)


Wind

■ 研发费用 (亿) — 研发费用率 (%)



Wind



Wind

Wind

Wind

Wind



13911026534	hanqiuyue@cindasc.com
13520816991	bianshuang@cindasc.com
13816799047	liuchenxu@cindasc.com
18618460223	gushijia@cindasc.com
18340820155	weichong@cindasc.com
18506960410	quejiacheng@cindasc.com
13051504933	qiliyuan@cindasc.com
18121125183	wangliben@cindasc.com
18516562656	sunsiya@cindasc.com
15800476582	wuguo@cindasc.com
13023188237	zhangqiongyu@cindasc.com
15618358383	guopengcheng@cindasc.com
13122616887	liruolin@cindasc.com
13530830620	wangliuyang@cindasc.com
15986679987	chenchen3@cindasc.com
17727821880	wangyufei@cindasc.com
18927445300	jiangkaiwen@cindasc.com
13229465369	yanna@cindasc.com
13032111629	jiaoyang@cindasc.com

币 卞 财
